

Puddle of Endlessness

Nature, History and the Moon

Tipping Points



If you opened people, you would find landscapes ... (Agnes Varda)



Tipping Point Salt Fields
160x90 cm - ltd. Edition
Fine Art Print - Diasec Plexiglas

A Closeup of a small puddle creates a view like flying above a huge landscape - it's a kind of „perspective jump“. Like the saline in this picture some glaciers, lakes or sometimes snow show also marks of bloody reds. Looking horrible in the first place, it harmlessly is caused by iron oxyde or algae. The feeling you get is a question of perspectives - a scientist has a differnt view than a screenwriter on this phenomenon.



Tipping Points reached - photographic studies
Arctic ice melt, vanishing glacier ... irreversible changes



Cratere - Vulcano - photographic studies

Crater, earthquake or battlefield ... when Disasters become attractions.

Battle Erasement - F*u Warship



Plexiglass object 2022, approx. 40x40 cm - height: 120 cm

F*u Warship II



Black (Irish) Sea - Fine Art Prints/Diasac Plexiglass - 120/40, 90x30 cm - ltd. Edition

Waterlooo



Resin on very light Wenzhou Paper Print - mounted on scratched Canvas (170x120 cm) - moved by a Fan (first conceptual study)

Bloodlands



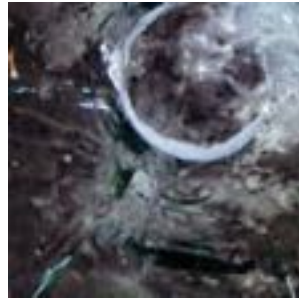
Layers of oilpaint glaze, resin and small points of sheets of silver on printed watercolor-paper (6 Pieces 70x70 cm each)

Virtual Test Installation *Moonshots*



Sleeping on Broken Glass - Size of the Tondis Ø 20, 30 40 cm - Technique: Oil on Canvas

Details Moonshot Painting



Conceptual landscape study



Virtual Test Installation: Transparent Print on Organza

How to deal with this overwhelming emotional feelings when you walk into Burris earthquake memorial in Gibellina - with the concret boxes covering the left overs of the peoples destroyed houses like coffins? I tried to focus my view on the cracks and gaps from above - they look like knife cuts or injuries - even from a distance.

Title: Gibellina Cracks - concrete boxes over ruins (earthquake memorial)
Dimension: 60x40/80x60 framed, 2016
Technique/Material: Fine Art archival Pigmentprint



